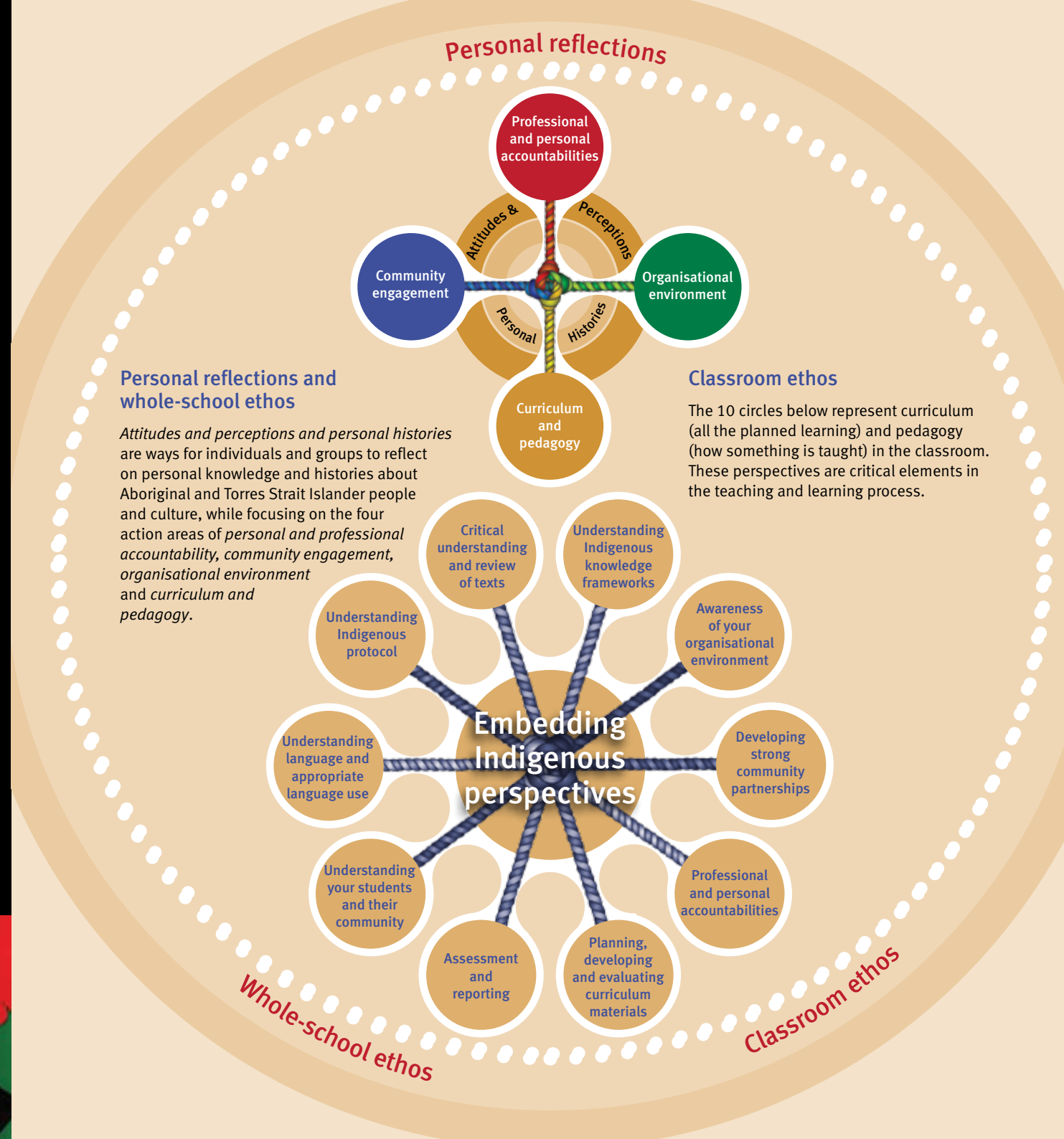


## Contact

Indigenous Schooling Support Unit  
— Central Southern Queensland (ISSU CSQ)

**John Davis**  
Regional Project Manager  
Phone: 07 3381 6400  
Mobile: 0429 075 333  
Email: John.A.DAVIS@deta.qld.gov.au

To see the full EATSIPs policy, visit:  
[www.learningplace.com.au/ea/issu-csq](http://www.learningplace.com.au/ea/issu-csq)



Tomorrow's Queensland:  
strong, green, smart, healthy and fair



## Embedding Aboriginal and Torres Strait Islander Perspectives in schools

A guide for school learning communities



## What is EATSIPS?

Embedding Aboriginal and Torres Strait Islander Perspectives in Schools (EATSIPS).

Aboriginal and Torres Strait Islander history, language and culture are integral to our national identity. There are more than 500 000 Indigenous people in Australia. Teaching Aboriginal and Torres Strait Islander cultures and perspectives in schools will help improve outcomes for Indigenous people, as well as improve learning and understanding for all students. EATSIPS will help school communities to build long lasting, meaningful relationships with Aboriginal and Torres Strait Islander people.

EATSIPS aims to provide all students with an understanding and respect for Aboriginal and Torres Strait Islander people and traditional and contemporary cultures.

The *Queensland Government Reconciliation Action Plan 2009–2012*, identifies EATSIPS as a key initiative for state schools across Queensland. It is also a key priority of the national *Aboriginal and Torres Strait Islander Education Action Plan 2010–2014*. Implementing this initiative will help close the gap between Indigenous and non-Indigenous Australians in life expectancy, educational achievement and economic opportunity.

EATSIPS provides a ‘how to’ for school communities to help effectively embed Aboriginal and Torres Strait Islander perspectives. The three key components of the EATSIPS framework are:

### 1. Personal reflections

#### Attitudes, perceptions and personal histories

- Reflecting on personal knowledge and histories about Aboriginal and Torres Strait Islander people and culture through individual and family experiences, group and religious affiliations, cultural beliefs, values and more.
- Building a sense of self and understanding about others and how that impacts on relationships.

### 2. Whole-school ethos

#### Schools embracing Aboriginal and Torres Strait Islander people

- Personal and professional accountability — school leaders and teachers will receive training to ensure greater cultural and linguistic understanding and skills to teach Indigenous and non-Indigenous students.

- Curriculum and pedagogy (teaching and learning) — encouraging learning environments that value and respond to diversity.
- Organisational environment — the day-to-day way a school organises itself and how it operates, including timetables, resources and professional development.
- Community engagement — schools develop strong partnerships with the local Aboriginal and Torres Strait Islander communities.

### 3. Classroom ethos

#### Examining ways to ensure a balanced and inclusive curriculum

- Encouraging teachers to use their curriculum and pedagogy process and practices to provide a balanced inclusive curriculum.
- Focusing on content and process.
- Educating — talking to a wide variety of people, reading varied media and materials, watching videos on Indigenous people and culture.

## How can I be involved?

Community participation in implementing EATSIPS is vital to its success.

An understanding of and respect for Australia’s Indigenous peoples — their personal histories, beliefs and values, languages and lifestyles — will help improve outcomes for Indigenous and non-Indigenous students. Through the use of Indigenous knowledge frameworks, students will be immersed in Aboriginal and Torres Strait Islander culture, rather than simply learning about it.

You can:

- tell your school/s that you want to be involved in implementing EATSIPS
- develop an EATSIPS education committee in the school or a group that is community controlled that influences the school’s P&C.

Participating in implementing EATSIPS benefits the wider community, parents and carers by increasing opportunities for Aboriginal and Torres Strait Islander community decision-making and engagement in school.

EATSIPS is a result of collaborative work with Aboriginal and Torres Strait Islander people and communities, as well as educators in schools across the state.

EATSIPS is everyone’s business: teachers, students, families, and communities.

EATSIPS represents an important journey for our school communities.

