

Child Care Census 2008 fact sheet

Long day care services

Introduction

Long day care services generally operate for more than eight hours a day and in excess of 48 weeks per year. These services provide care, developmental and recreational programs, primarily for children ranging from birth to school age, although many services also cater for school age children outside school hours. At the time of Census 2008, there were 1433 licensed long day care services in Queensland, an increase of 4.9% since 2007. The Census 2008 response rate for long day care services was 86.9%. This is slightly lower than the previous year's response rate of 87.1%.

Interpretation

The comments, tables and charts in this fact sheet are based on the data provided by the 1245 long day care services that responded to Census 2008. In any interpretation of the data, readers need to be aware of the voluntary nature of the survey, which ultimately influences

the response rate, and that the information collected is based on self-reporting by services. **There has not been an attempt made to estimate data from the services that did not respond to the census. As such, the numbers do not represent total child care provision.** However, given the moderately high response rate, percentages are indicative of long day care provision in Queensland.

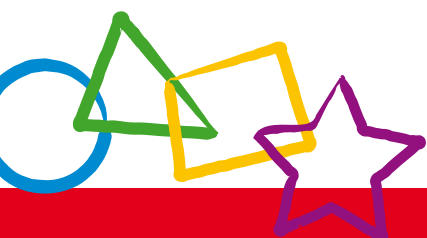
Fees

The fees per day charged by long day care services vary according to the age of the children receiving care. Table 1 shows the number of services charging fees by different age groups. The majority of those providing care for babies less than 15 months and infants aged 15 months to 3 years charge a daily rate of \$50.00 to \$69.99. A substantial number of long day care services do not provide places for babies under 15 months. These services were coded as 'not applicable' and have been excluded for the purposes of calculating percentages for fees per day.

Table 1: Daily fees charged by long day care services by age groups

Fees per day	Under 15 months			15 months to under 3 years			3 years to school age		
	No.	% of total	% of applicable	No.	% of total	% of applicable	No.	% of total	% of applicable
Less than \$25.00	7	0.6	0.7	9	0.7	0.8	15	1.2	1.2
\$25.00 to \$29.99	-	0.0	0.0	1	0.1	0.1	5	0.4	0.4
\$30.00 to \$34.99	2	0.2	0.2	4	0.3	0.3	7	0.6	0.6
\$35.00 to \$39.99	3	0.2	0.3	3	0.2	0.3	6	0.5	0.5
\$40.00 to \$44.99	9	0.7	1.0	18	1.4	1.5	26	2.1	2.2
\$45.00 to \$49.99	33	2.7	3.5	59	4.7	5.0	83	6.7	6.9
\$50.00 to \$54.99	107	8.6	11.3	199	16.0	16.9	342	27.5	28.4
\$55.00 to \$59.99	226	18.2	24.0	372	29.9	31.5	365	29.3	30.3
\$60.00 to \$64.99	263	21.1	27.9	324	26.0	27.5	292	23.5	24.2
\$65.00 to \$69.99	240	19.3	25.5	158	12.7	13.4	44	3.5	3.7
\$70.00 to \$74.99	45	3.6	4.8	28	2.2	2.4	16	1.3	1.3
\$75.00 or over	8	0.6	0.8	5	0.4	0.4	5	0.4	0.4
Sub-total	943	75.7	100.0	1180	94.8	100.0	1206	96.9	100.0
Not applicable	252	20.2		34	2.7		17	1.4	
Missing	50	4.0		31	2.5		22	1.8	
Total	1245	100.0		1245	100.0		1245	100.0	

Note: Sub-total excludes not applicable and not stated. Percentages may not add to exactly 100% due to rounding.



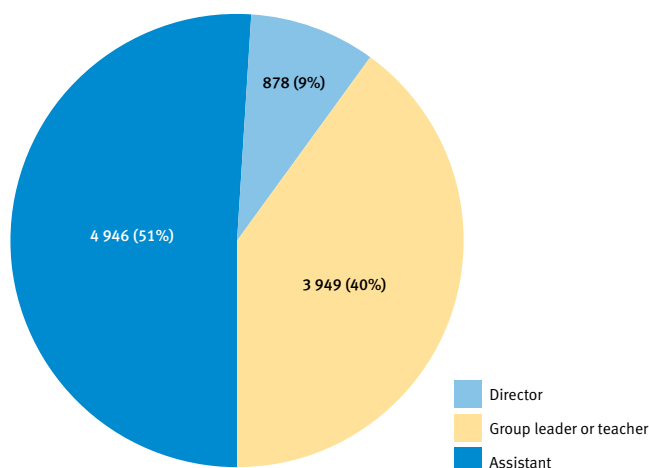
Waiting lists

Of the 1245 long day care services that responded to the census, 614 (49.3%) indicated that they had a waiting list. The majority of children (68.7%) on waiting lists for long day care services were two years of age or younger. Data on the number of children on waiting lists may be inflated by double counting, as one child may be on several waiting lists.

Staff

Long day care services responding to Census 2008 indicated that 9773 child care staff¹ worked in their services during census week. Of these staff, 4946 (50.6%) were child care assistants, 3949 (40.4%) were group leaders or teachers, and 878 (9.0%) were directors (Figure 1).

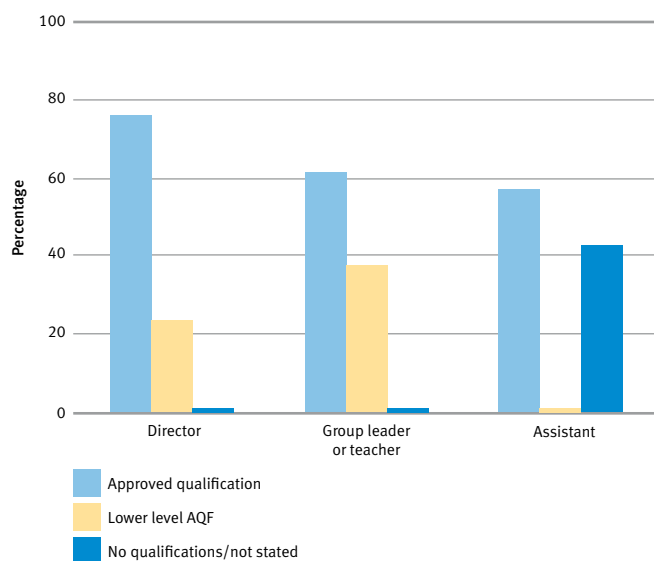
Figure 1: Staff positions in long day care services



Staff with approved qualifications

At the time of the census, approved qualifications for staff in licensed child care services were set down in the *Child Care Regulation 2003* pertaining to the *Child Care Act 2002*. In licensed long day care services, 76.0% of directors, 61.6% of group leaders or teachers and 56.8% of assistants held approved qualifications for their position (Figure 2).¹

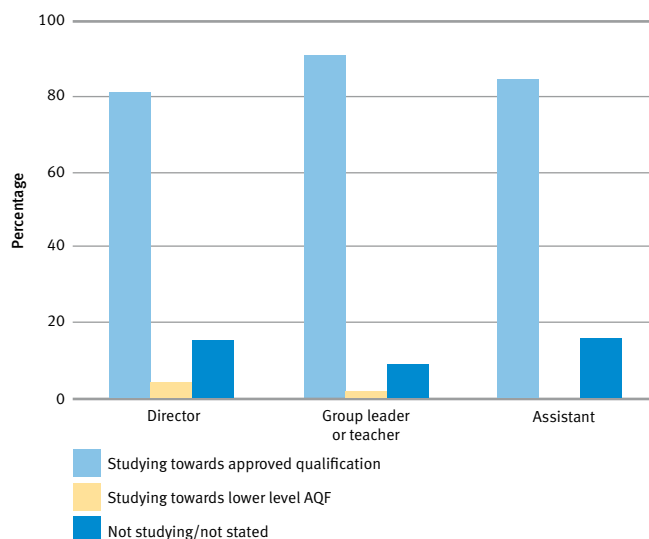
Figure 2: Staff holding approved qualifications



Note: The Australian Qualifications Framework (AQF) defines all qualifications recognised nationally in education and training in Australia. Different qualification levels are required for people holding different positions in long day care services. The minimum approved qualification for a director of a centre licensed for more than 30 places is AQF Level 6 or equivalent, for assistant directors, group leaders and teachers it is AQF Level 5 or equivalent, and for assistants it is AQF level 3 or equivalent.

Of the 3858 staff working during census week who were not reported to hold the required qualifications (excluding not stated and missing), 86.4% indicated that they were studying towards approved qualifications (Figure 3).

Figure 3: Staff without approved qualifications² currently studying



Note: Excludes six staff members for which services did not nominate if a qualification was held.

Early childhood education programs

An early childhood education program refers to an early learning program delivered by a qualified early childhood teacher to children in the year before they commence full-time schooling. Over 250 long day care services (21.0%) indicated that they provide early childhood education programs for children aged 3½ to 4½ years of age and/or 4½ to 5½ years of age.

Of the 488 staff delivering early childhood education programs, 63.5% held a four-year qualification in early childhood education and 36.5% held a three-year qualification in early childhood education. The majority (82.0%) of staff delivering early childhood education programs were registered teachers.

Table 2: Qualifications of staff delivering an early childhood education program

Qualification held	Registered		Not registered		Total	
	No.	% of total	No.	% of total	No.	% of total
3 year qualification in early childhood education – 3½ to 4½ years	74	18.5	25	28.4	99	20.3
4 year qualification in early childhood education – 3½ to 4½ years	132	33.0	14	15.9	146	29.9
3 year qualification in early childhood education – 4½ to 5½ years	53	13.3	26	29.5	79	16.2
4 year qualification in early childhood education – 4½ to 5½ years	141	35.3	23	26.1	164	33.6
Total	400	100.0	88	100.0	488	100.0

Footnotes:

- 1 Excludes Inclusion Support Subsidy (ISS) workers, Job Education and Training (JET) workers, administrative staff and ancillary and other contact and non-contact workers.
- 2 From Census 2004 onwards, services were asked which qualifications, if any, were held by each staff member. The number of staff with approved qualifications was derived from this data. This differed from Census 2002 and 2003, when services were asked whether or not each staff member held the qualifications required for the position they held.